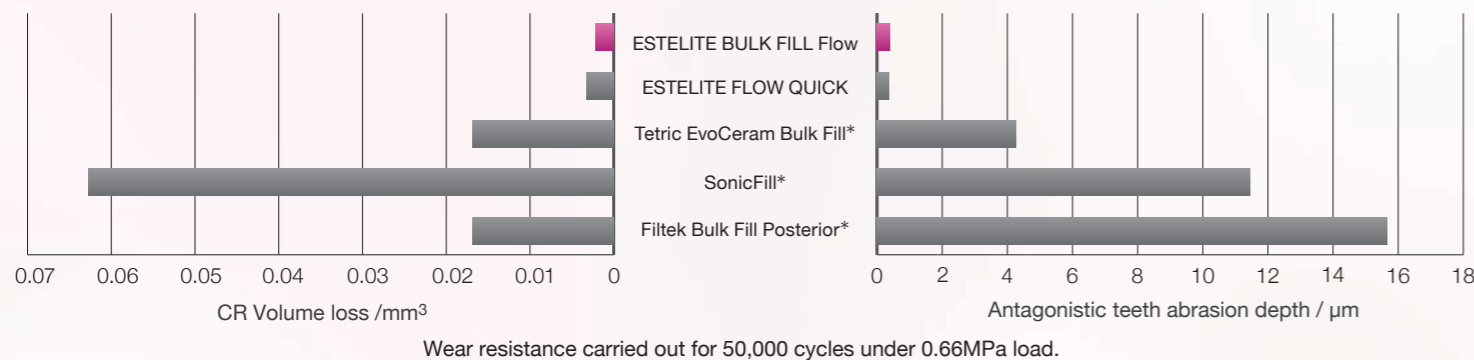


Reliable 2

ESTELITE BULK FILL Flow has comparable properties to its competitors, including low shrinkage stress and good radiopacity (170%). Its high compressive strength and wear resistance makes ESTELITE BULK FILL Flow ideal for occlusal force-bearing areas.

High Wear Resistance & Less wear to opposing teeth



Simple

- Only One layer up to 4mm, NO capping layer required
- Quick 10 second curing time
- Easy Polishing

High Esthetics

- Blends easily with the surrounding dentition
- Superior Long-lasting Glossiness

Reliable

- Low Shrinkage Stress
- Good Cavity Adaptability
- High Wear Resistance and Less wear to opposing teeth

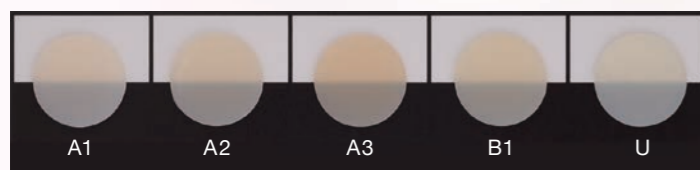


*Not a registered trademark of Tokuyama Dental Source: Tokuyama Dental R&D

Product Packages Available



ESTELITE BULK FILL Flow Syringe Refills
 Contents: 1 syringe (3.0g); 10 metal tips; shade card
 Available in 5 shades: A1, A2, A3, B1, U



ESTELITE BULK FILL Flow PLT Refills
 Contents: 20 PLTs(0.2g each); shade card
 Available in 5 shades: A1, A2, A3, B1, U

Accessory

TOKUYAMA Dispensing Tip
 Contents: 50 metal tips



Manufactured by
Tokuyama Dental Corporation
 38-9, Taitou 1-chome, Taitou-ku, Tokyo, Japan
 TEL:+81-3-3835-2261 FAX:+81-3-3835-2265
 Email: export-2@tokuyama-dental.co.jp
 URL: www.tokuyama-dental.com



*Now, a flowable bulk fill resin can be used for esthetic restorations!
 A flowable bulk fill resin can be applied to a variety of cases, regardless of the cavity configuration.*

The reasons are:

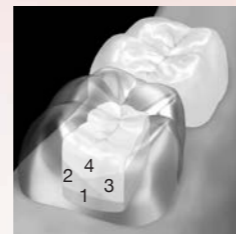
Simple

ESTELITE BULK FILL Flow is different from the traditional 2mm incremental technique and commercial bulk fill flowable composites requiring a universal cap. With ESTELITE BULK FILL Flow, ONLY one layer up to 4mm is required to complete a restoration. A quick curing time and easy polishing also make the procedure shorter and simpler without sacrificing esthetics.

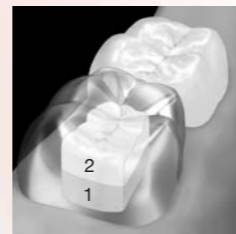
Simple Filling



ESTELITE BULK FILL Flow
ONLY One layer



Incremental technique



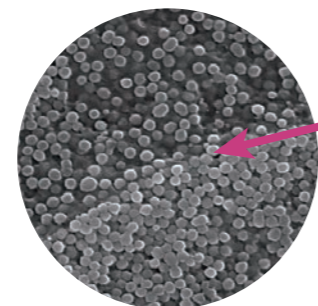
Bulk fill flowable with
universal cap

- ▶ No incremental placement
- ▶ No capping layer required
- ▶ Single fill up to 4mm

Quick Curing

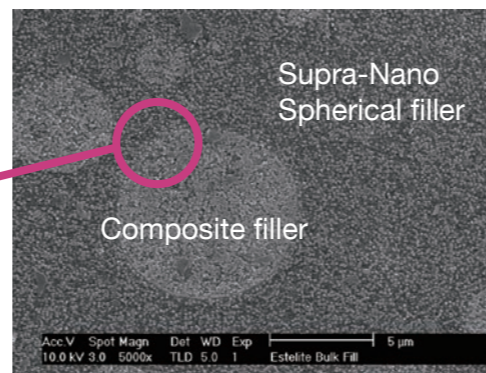


10 second light cure
($\geq 800\text{mW/cm}^2$)



Supra-Nano Spherical filler

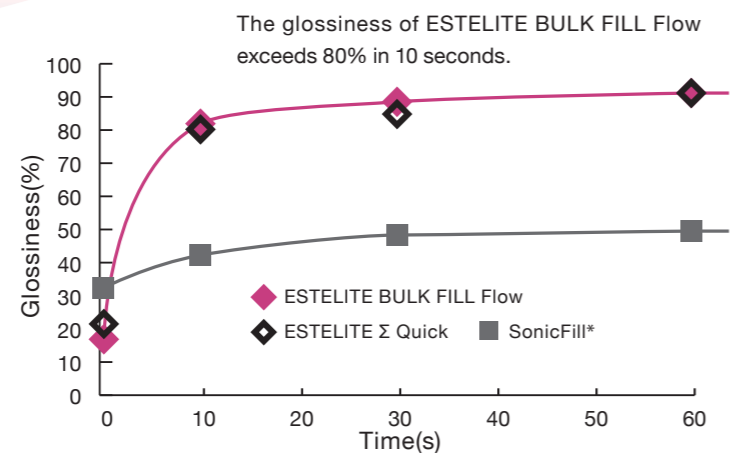
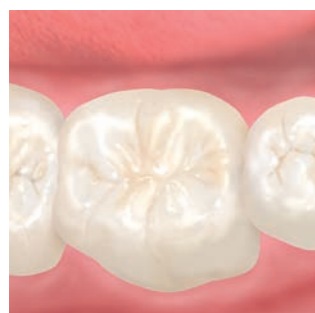
- Good polishability
- Superior long-lasting gloss



Round composite filler

- Stress relief
- Prepolymerized by Supra-Nano Spherical filler and monomer

Easy Polishing

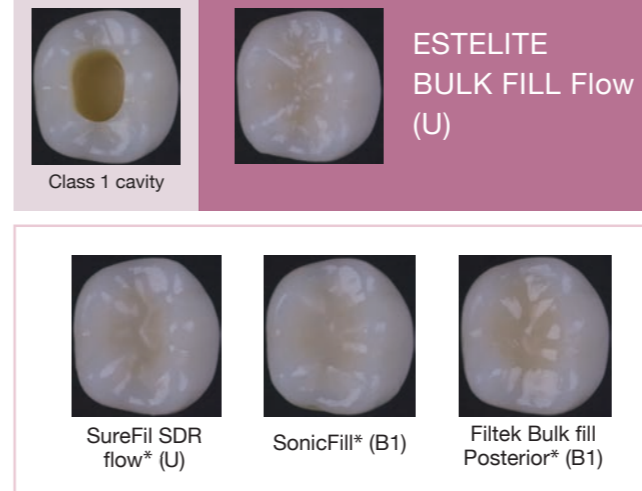


Glossiness measured by polishing in 60 seconds with Sof-lex super fine.

High Esthetics

Natural Esthetic Effect

A chameleon effect and the proper translucency of the ESTELITE BULK FILL Flow create a superior match to the surrounding dentition. As a result, the margin between the tooth and the composite is invisible.



- Direct anterior and posterior restorations

- Cavity lining

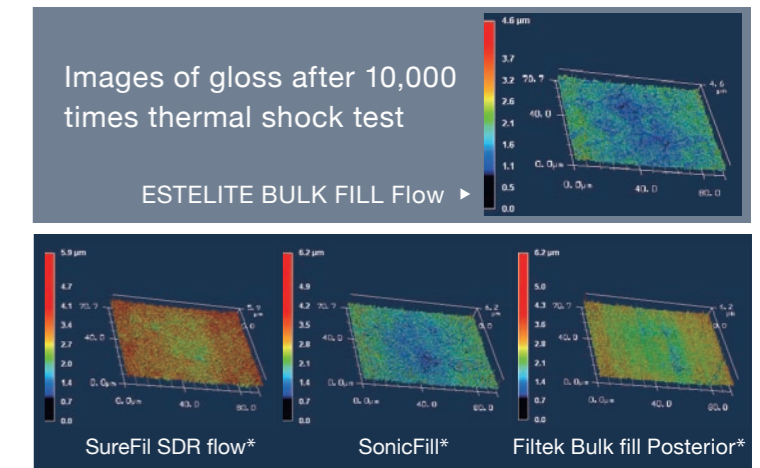
- Blocking out cavity undercuts before fabrication indirect restorations

- Repair of porcelain/composite

Indications

Superior Long-lasting Gloss

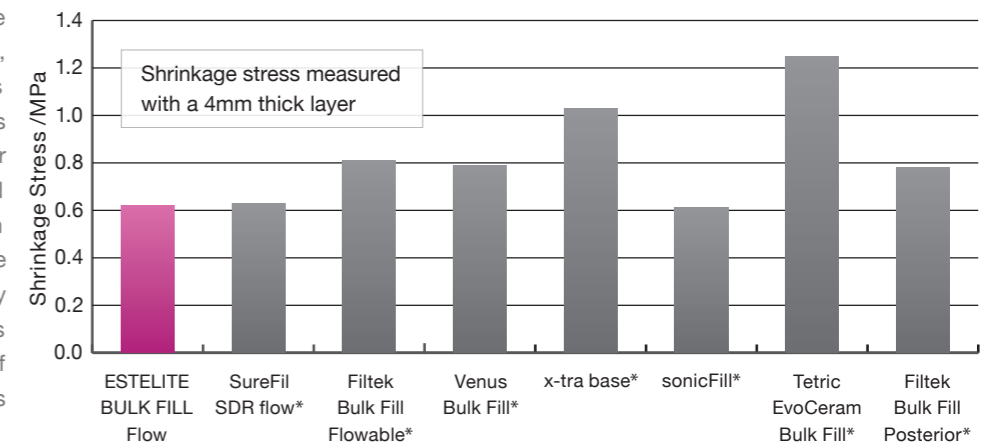
The Supra-Nano Spherical filler in ESTELITE BULK FILL Flow makes polishing easy. The unique size and shape of the particles allow for a long-lasting smooth surface and gloss.



Reliable

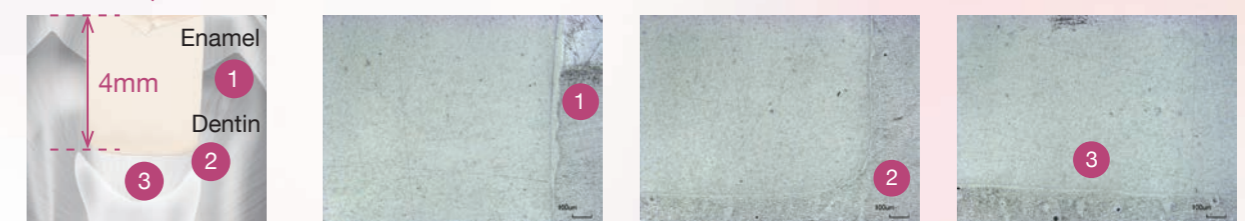
Low Shrinkage Stress

The spherical shape of the Supra-Nano particles and the round shape of the composite filler with small surface area used in ESTELITE BULK FILL Flow does not limit the movement of the fillers, causing less friction among the particles and matrix. While the material polymerizes, the resin shrinks inwards and the fillers are able to adjust their positions to avoid bearing too much stress. As a result, the stress is spread evenly among the particles and the shrinkage of the composite resin is decreased.



Good Cavity Adaptation

ESTELITE BULK FILL Flow adapts to the size and shape of any cavity, and because of its low shrinkage and flowability, porosities or voids are eliminated.



*Not a registered trademark of Tokuyama Dental

Source: Tokuyama Dental R&D